



RE-GEN FUTURE

PRODUCT DETAILS

Specification	
Pile Weight:	1650gr/m2
Total Weight:	2650gr/m2
Width:	4m & 5m
Pile Content:	100% Recycled Polyester
Secondary Backing:	100% Recycled Polyester
Origin:	EEC
Suitability:	Heavy Domestic
Warranty:	15 Years

Features
Regular nationwide delivery service.
Fashionable colours to meet a wide variety of interior styles.
Ease of maintenance.
All colours available for immediate call off.

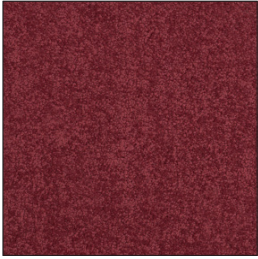
Installation
<p>To be installed in accordance with 855323 'Code of Practice for the Installation of Floor Coverings' and NICF manual.</p> <p>Pattern match cannot be guaranteed with any tufted patterned carpet. For quantity orders requiring colour matching, please state at the time of ordering. All samples may not be from the same production batch as current stock and therefore should be used as a guide and not as an exact match.</p> <p>Colour variations: There may be colour variations/shade variations between each batch of carpet as well as with undyed materials.</p>

General information
<p>To be installed in accordance with 855323 'Code of Practice for the Installation of Floor Coverings' and NICF manual.</p> <p>Pattern match cannot be guaranteed with any tufted patterned carpet. For quantity orders requiring colour matching, please state at the time of ordering. All samples may not be from the same production batch as current stock and therefore should be used as a guide and not as an exact match.</p> <p>Colour variations: There may be colour variations/shade variations between each batch of carpet as well as with undyed materials.</p>

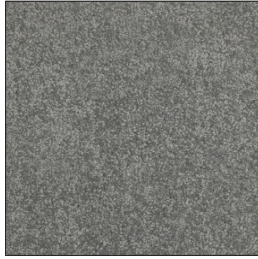
Maintenance
<p>Carpetline Direct recommend that this carpet is maintained in accordance with an agreed maintenance schedule which should include the following:</p> <ul style="list-style-type: none">i). Vacuum regularly.ii). Remove spills immediately.iii). Professionally clean as required.

RE-GEN FUTURE

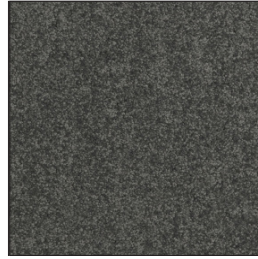
PRODUCT DETAILS



Crimson 1864



Elephant 1879



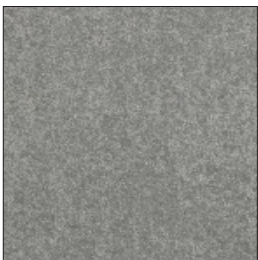
Evening 1858



Forest 1868



Fuchsia 1865



Gullwing 1878



Ivory 1869



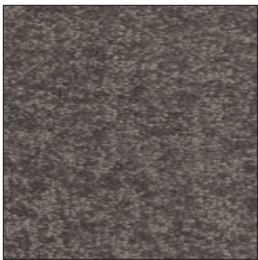
Kingfisher 1866



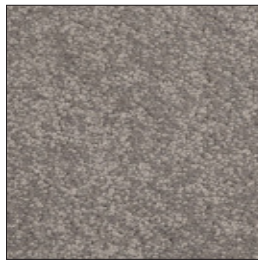
Loam 1870



Mist 1877



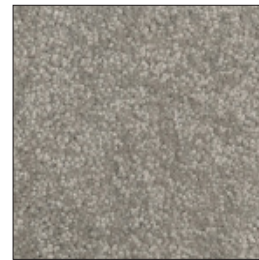
Moleskin 1876



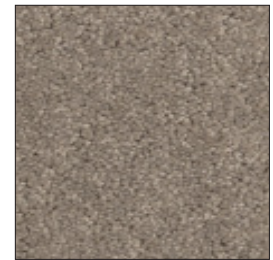
Mule 1871



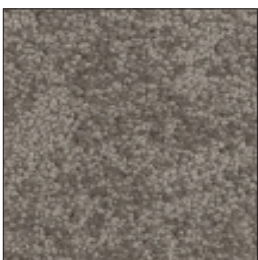
Pebble 1873



Stone 1851



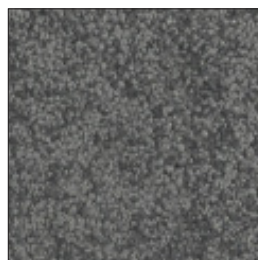
Suede 1874



Taupe 1872



Teal 1867



Woodsmoke 1875