

TOBAGO

PRODUCT DETAILS

Specification	
Pile Weight:	1200gr/m2
Total Weight:	2200gr/m2
Width:	4m
Pile Content:	100% Polypropylene
Backing	Felt
Origin:	EEC
Suitability:	Heavy Domestic
Warranty:	5 Years

Features
Regular nationwide delivery service.
Fashionable colours to meet a wide variety of interior styles.
Ease of maintenance.
All colours available for immediate call off.

Installation
<p>To be installed in accordance with 855323 'Code of Practice for the Installation of Floor Coverings' and NICF manual.</p> <p>Pattern match cannot be guaranteed with any tufted patterned carpet. For quantity orders requiring colour matching, please state at the time of ordering. All samples may not be from the same production batch as current stock and therefore should be used as a guide and not as an exact match.</p> <p>Colour variations: There may be colour variations/shade variations between each batch of carpet as well as with undyed materials.</p>

General information
<p>To be installed in accordance with 855323 'Code of Practice for the Installation of Floor Coverings' and NICF manual.</p> <p>Pattern match cannot be guaranteed with any tufted patterned carpet. For quantity orders requiring colour matching, please state at the time of ordering. All samples may not be from the same production batch as current stock and therefore should be used as a guide and not as an exact match.</p> <p>Colour variations: There may be colour variations/shade variations between each batch of carpet as well as with undyed materials.</p>

Maintenance
<p>Carpetline Direct recommend that this carpet is maintained in accordance with an agreed maintenance schedule which should include the following:</p> <ul style="list-style-type: none"> i). Vacuum regularly. ii). Remove spills immediately. iii). Professionally clean as required.

TOBAGO

PRODUCT DETAILS



Dark Grey 56588



Frost 72201



Malt 53629



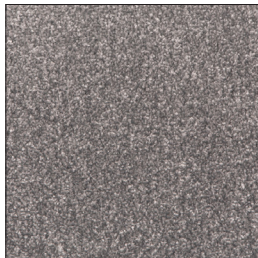
Mid Grey 55924



Nutmeg 59810



Oak 58988



Silver 50623

