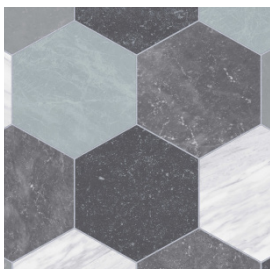


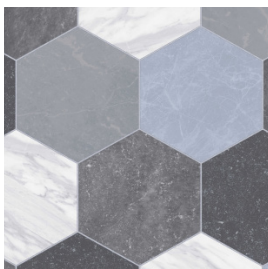
Vinyl Details

Range Name: Art Decor		
DESIGN REFERENCE: ARTD		
Pile Weight:		
Pile Content: Vinyl		
Total Weight: 1330g/m ²		
Width: 3m & 4m		
Wear Layer: 0.2mm		
Total Thickness: 2.6mm		
Origin: EEC	TOG:	
Suitability: Heavy Domestic		Wear Warranty:
Locations	Yes	No
Lounge	Yes	
Dining Room	Yes	
Hall/Passage	Yes	
Bedroom	Yes	
Stairs		
Kitchen	Yes	
Bathroom	Yes	
Additional Notes: Surface Mass EN ISO 23997: 1330g/m ² Underfloor heating: Suitable. Anti-Slip: R11 rated. Colour fastness ISO 105-B02: 6/7 Roll Length: 25m Abrasion Group: EN 660-2 Class T Fire Classification: EN 13501-1 Class: Bfl-s1 Thermal Resistance: ISO 8302: 0.017m ² K/w Thermal Conductivity: EN 12524: 0.15W/m.K		
Design/Colours	Number	
Pembroke 905m		
Pembroke 907m		
Pembroke 990m		
Pembroke 999d		
Prism 994d		
Prism 904d		
Prism 049l		
Yorvik 940m		
Yorvik 970d		
Prime Oak 909d		
Prime Oak 949d		
Cameo 690m		
Cameo 060s		
Castleton 909e		
Castleton 904m		
Castleton 964d		
No. of Colours in Range:	16	

Images & Colour Palettes



Pembroke - 905m



Pembroke - 907m



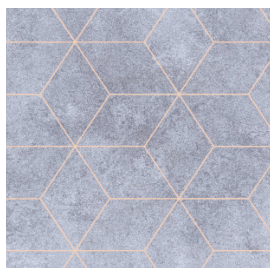
Pembroke - 990m



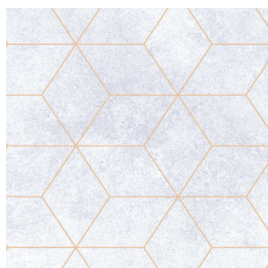
Pembroke 999d



Prism 994d



Prism - 904d



Prism - 049l



Yorvik - 940m



Yorvik - 970d



Prime Oak - 909d

Images & Colour Palettes



Prime Oak - 949d



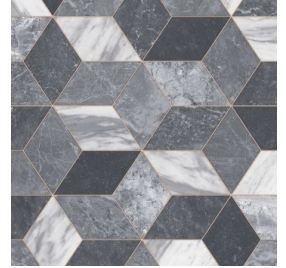
Cameo - 690m



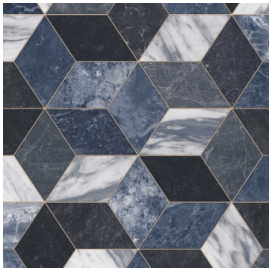
Cameo - 060s



Castleton - 909e



Castleton - 904m



Castleton - 964d